

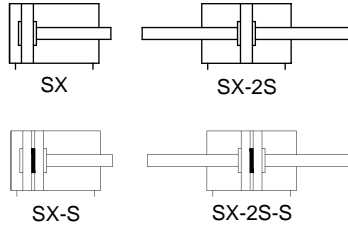
GENERAL CATALOGUE

# MOVEMENT MOVEMENT

## SX Series Double Shaft Cylinder



- Bore:  $\Phi$  16-100mm
- Graphics Sign



### Features

- Dual rod cylinder with guide function
- Best used in pick and place applications
- Push pull type configuration also available
- Magnetic and non-magnetic versions available

### Order Code

**SX**

Series  
SX: Standard Double Acting Type

**20 x 50**

Size  
Bore X Stroke

**2S**

Piston Rod  
Blank: Single Rod  
2S: Through Rod

**S**

Magnet  
Blank: Without Magnet  
S: With Magnet

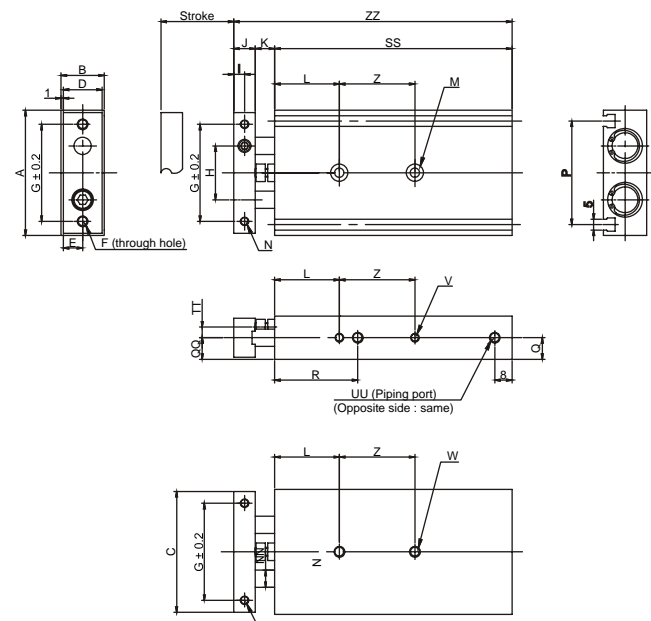
### Technical Parameter

Bore (mm)	15	20	25
Standard Stroke Length* (mm)	10, 20, 30, 40, 50, 75, 100		
Action	COUPLE ACTING TYPE		
Medium	Filtered and Lubricated Compressed Air		
Operating Pressure Range	1 - 7 Kgf/Cm <sup>2</sup>		
Proof Pressure	10.5 Kgf/Cm <sup>2</sup>		
Ambient and Medium Temperature	- 5° to 70°C		
Operating Piston Speed	30 - 700 mm/s		
Bearing Type	Slide bearing		
Cushion Type	rubber bumper at both ends		
Port Size	M5 X 0.8		G1/8*

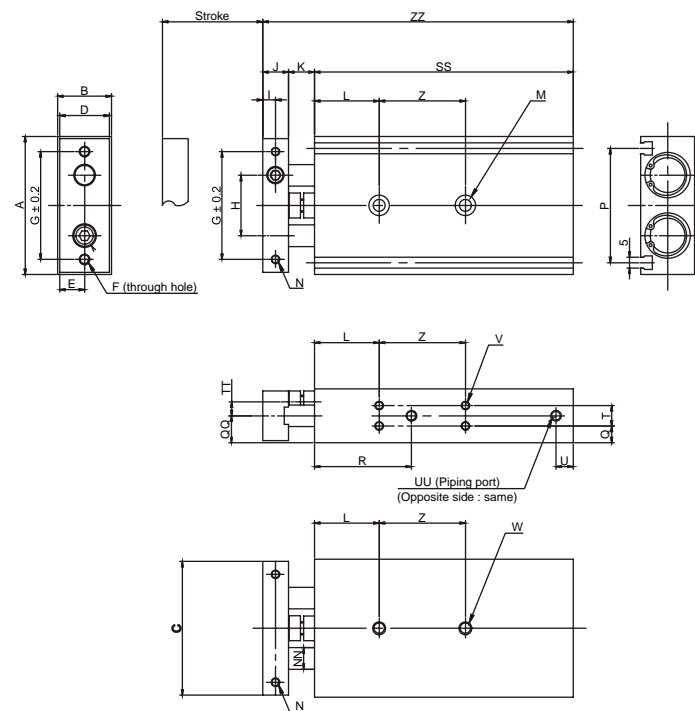
\* Non standard or longer stroke cylinders available on request

# MOVEMENT

SX-15



SX-20/25



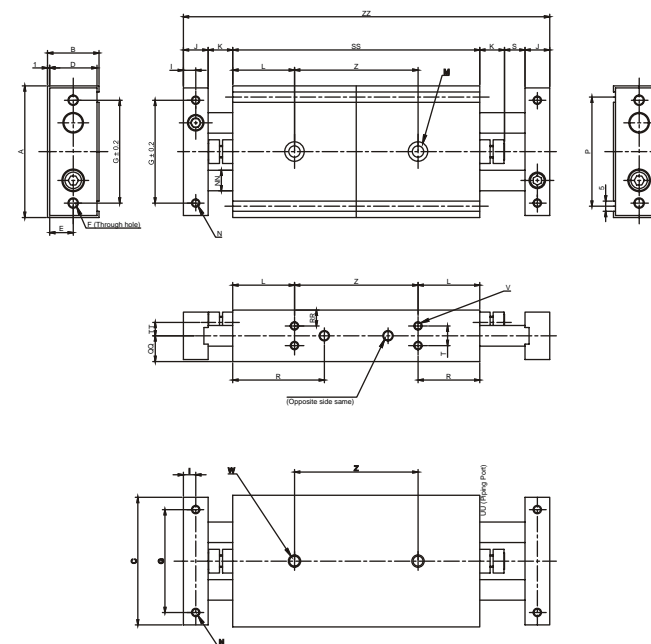
BORE	A	B	C	D	E	F	G	H	I	J	K	L	M	N
15	58	20	56	18	9	2 x M5 x 0.8	45	25	5	10	9	30	2 x Ø4.3 through 2xØ8counterbore depth 4.4	2 x M4 X 0.7 thread depth 6
20	64	25	62	23	11.5	2 x M5 x 0.8	50	28	6	12	12	30	2 x Ø5.5 through 2xØ9.5counterbore depth 5.3	2 x M4 X 0.7 thread depth 6
25	80	30	78	28	14	2 x M6 X 1.0	60	35	6	12	12	30	2 x Ø6.9 through 2x Ø11 counterbore depth 6.3	2 x M5 X 0.8 thread depth 7.5

BORE	NN	P	Q	QQ	R	T	TT	UU	V	W
15	Ø8	48	10	10	38.5	-	5	2 X 2 M5 X 0.8 thread depth 4.5	4 x M4 x 0.7 thread depth 5	2 x M5 x 0.8 thread depth 8
20	Ø10	53	7.75	12.5	45	9.5	6.5	2 X 2 M5 X 0.8 thread depth 4.5	8 x M4 x 0.7 thread depth 5.5	2 x M6 x 1.0 thread depth 10
25	Ø12	64	8.5	15	46	13	9	2 x 2 x Rc 1/8 thread depth 6.5	8 x M5 x 0.8 thread depth 7.5	2 x M8 x 1.25 thread depth 12

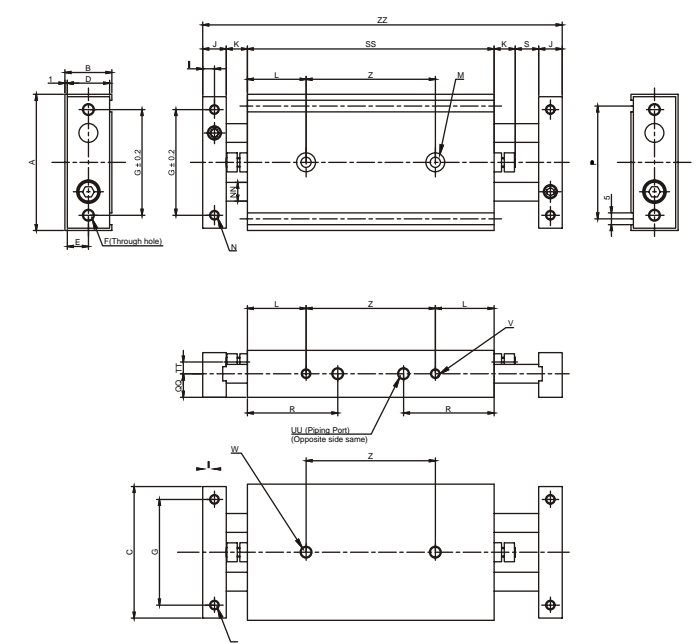
# MOVEMENT

## SX Series Double Shaft Cylinder

SX-20/25-2S



SX-15-2S



BORE	A	B	C	D	E	F	G	I	J	K	L	M
15	58	20	56	18	9	2 x 2 x M5 x 0.8	45	5	10	9	30	2 x Ø4.3 through 2xØ8counterbore depth 4.4
20	64	25	62	23	11.5	2 x 2 x M5 x 0.8	50	6	12	12	30	2 x Ø5.5 through 2xØ9.5counterbore depth 5.3
25	80	30	78	28	14	2 x 2 x M6 X 1.0	60	6	12	12	30	2 x Ø6.9 through 2xØ11counterbore depth 6.3

BORE	N	NN	P	QQ	R	T	TT	UU	V	W
15	4 x M4 X 0.7 thread depth 6	Ø8	48	10	38.5	-	5	2 X 2 M5 X 0.8 thread depth 4.5	2 x 2 x M4 x 0.7 thread depth 5	2 x M5 x 0.8 thread depth 8
20	4 x M4 X 0.7 thread depth 6	Ø10	53	12.5	45	9.5	6.5	2 X 2 M5 X 0.8 thread depth 4.5	2 x 4 x M4 x 0.7 thread depth 5.5	2 x M6 x 1.0 thread depth 10
25	4 x M5 X 0.8 thread depth 7.5	Ø12	64	15	46	13	9	2 x 2 x Rc 1/8 thread depth 6.5	2 x 4 x M5 x 0.8 thread depth 7.5	2 x M8 x 1.25 thread depth 12