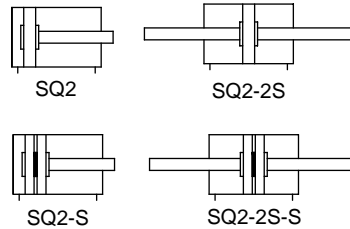


MOVEMENT MOVEMENT

SQ2 Series Compact Cylinder

- Bore: Φ 16-100mm
- Graphics Sign



Features

- Compact, light weight and space saving design
- Large clamping force in relation to their size
- Available with male and female thread piston rod
- Magnetic and non-magnetic versions
- Single and double acting configurations are available

Order Code

SQ2

Series

SQ2: Standard double acting type

20x30

Size

Bore X Stroke

A

Mounting Style

A: Both End Tapped Style
B: Both End Tapped With Counter Hole
C: Through-hole

B

Piston Rod Thread

Blank: Female Thread
B: Male Thread

2S

Piston Rod

Blank: Single Rod
2S: Through Rod

S

Magnet

Blank : without magnet
S: with magnet

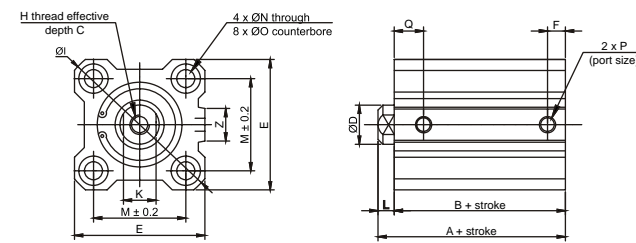
Technical Parameter

Bore (mm)	16	20	25	32	40	50	63	80	100
Standard Stroke Length* (mm)	5, 10, 15, 20, 25, 30, 35, 40, 45, 50, 55, 60, 65, 70, 75, 80								
Action	Double Acting Type								
Medium	Filtered And Lubricated Compressed Air								
Operating Pressure Range	1 - 10 Kgf/cm ²								
Proof Pressure	15 Kgf/cm ²								
Ambient And Medium Temperature	-5 - 70°C								
Operating Piston Speed	50 - 500 mm/s								
Cushion Type	Rubber Bumper On Both Ends								
Port Size	M5 X 0.8			G1/8"		G1/4"		G3/8"	

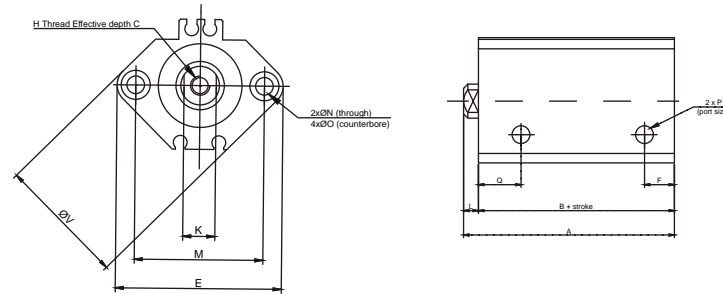
MOVEMENT

SQ2 Series Compact Cylinder

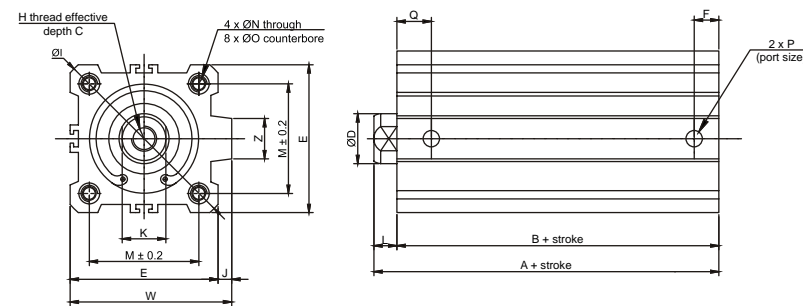
Ø16 to Ø25 Non Magnetic



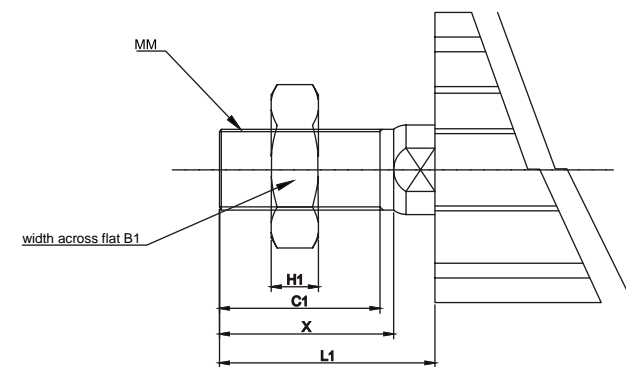
Ø16 to Ø25 Magnetic



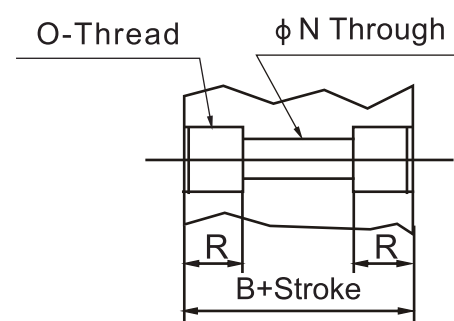
Ø32 to Ø100 Magnetic and Non Magnetic



Rod End Male Thread



Inner Thread Type / SQ2A



MOVEMENT

SQ2 Series Compact Cylinder

Ø16 to Ø25 Non Magnetic

Bore	Stroke Range (mm)	A	B	C	D	E	H	I	K	L	M	N	O	P	Q	Z
16	5 TO 30	22	18.5	8	8	29	M4 x 0.7	38	6	3.5	20	3.5	6.5 depth 5.5	M5 x 0.8	8	10
20	5 TO 30	24	19.5	7	10	36	M5 X 0.8	47	8	4.5	25.5	5.5	9 depth 7	M5 x 0.8	9	10
25	5 TO 30	27.5	22.5	12	12	40	M6 x 1.0	52	10	5	28	5.5	9 depth 7	M5 x 0.8	11	10

Ø16 to Ø25 Magnetic

Bore	Stroke Range (mm)	A	B	C	D	E	F	H	K	L	M	N	O	Q	V
16	5 to 30	34	30.5	8	8	37	5.5	M4 x 0.7	6	3.5	28	35	6.5 depth 3.5	10	29
20	5 to 30	36	31.5	7	10	47	5.5	M5 x 0.8	8	4.5	36	5.5	9 depth 7	10.5	36
25	5 to 30	37.5	32.5	12	12	52	5.5	M6 x 1.0	10	5	40	5.5	9 depth 7	11	40

Ø32 to Ø100 Magnetic and Non Magnetic

Bore	Stroke Range	Standard					Magnetic					C	D	E	H	J	K	L	M	N	O	W	Z			
		A	B	F	P	Q	A	B	F	P	Q															
32	5	30	23	5.5	M5 x 0.8	11.5																				
	10 TO 50 75,100	40	33	7.5	G1/8"	10.5	40	33	7.5	G1/8"	10.5	13	16	45	M8 x 1.25	4.5	14	7	35	5.5	9 depth 7	49.5	4			
40	5 TO 50 75,100	36.5	29.5	8	G1/8"	11	46.5	39.5	8	G1/8"	11	13	16	52	M8 x 1.25	5	14	7	40	5.5	9 depth 7	57	15			
	10 TO 50 75,100	38.5	30.5	10.5	G1/4"	10.5	48.5	40.5	10.5	G1/4"	10.5	15	20	64	M10 x 1.5	7	17	8	50	6.6	11 depth 8	71	19			

Bore	Stroke Range	Standard		Magnetic		C	D	E	F	H	J	K	L	M	N	O	P	Q	W	Z
		A	B	A	B															
63	10 to 50	44	36	54	46	15	20	77	10.5	M10 x 1.5	7	17	8	60	9	14 depth 10.5	G1/4"	15	84	19
	75, 100	54	46																	
80	10 to 50	53.5	43.5	63.5	53.5	21	25	98	12.5	M16 x 2.0	6	22	10	77	11	17.5 depth 13.5	G3/8"	16	104	25
	75, 100	63.5	53.5																	
100	10 to 50	65	53	75	63	27	30	117	13	M20 x 2.5	6.5	27	12	94	11	17.5 depth 13.5	G3/8"	23	123.5	25
	75, 100	75	63																	

Rod End Male Thread

Bore	B1	C1	H1	L1	MM	X
16	10	10	5	15.5	M6 x 1.0	12
20	13	12	5	18.5	M8 x 1.25	14
25	17	15	6	22.5	M10 x 1.25	17.5
32	22	20.5	8	28.5	M14 x 1.5	23.5
40	22	20.5	8	28.5	M14 x 1.5	23.5
50	27	26	11	33.5	M18 x 1.5	28.5
63	27	26	11	33.5	M18 x 1.5	28.5
80	32	32.5	13	43.5	M22 x 1.5	35.5
100	41	32.5	16	43.5	M26 x 1.5	35.5

Inner Thread Type / SQ2A

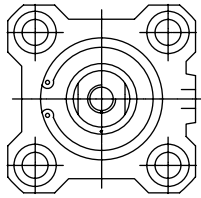
Bore	O	R
16	M4 x 0.7	7
20	M6 x 1.0	10
25	M6 x 1.0	10
32	M6 x 1.0	10
40	M6 x 1.0	10
50	M8 x 1.25	14
63	M10 x 1.5	18
80	M12 x 1.75	22
100	M12 x 1.75	22

MOVEMENT MOVEMENT

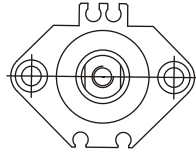
SQ2 Series Compact Cylinder

SQ2-2S Female Thread

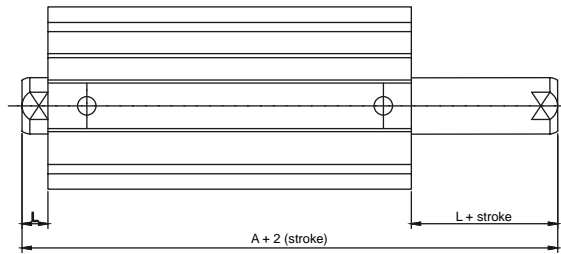
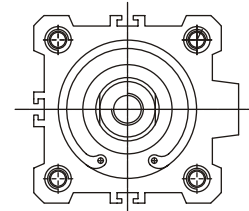
O16 to O25 Non Magnetic



O16 to O25 Magnetic

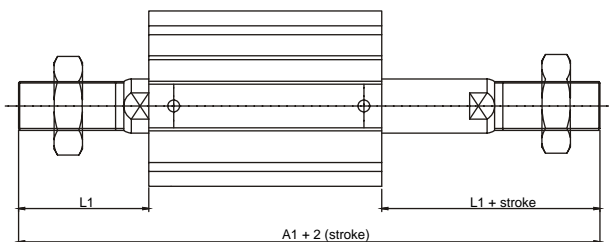


O32 to O100 Magnetic and Non Magnetic



Bore	Stroke Range (mm)	Standard		Magnetic		L
		A	B	A	B	
16	5 to 30	33	26	43	36	3.5
20	5 to 30	35	26	47	38	4.5
25	5 to 30	39	229	49	39	5
32	5	44.5	30.5	54.5	40.5	7
	10 TO 50					
40	75,100	54.5	40.5	64	50	7
	5 TO 50	54	40			
50	75,100	64	50	66.5	50.5	8
	10 TO 50	56.5	40.5			
63	75,100	66.5	50.5	68	52	8
	10 to 50	58	42			
80	75,100	68	52	81	61	10
	10 to 50	71	51			
100	75,100	81	61	94.5	70.5	12
	10 to 50	84.5	60.5			
		94.5	70.5			

SQ2-2S Male Thread



Bore	B1	C1	H1	L1	MM	X
16	10	10	5	15.5	M6 x 1.0	12
20	13	12	5	18.5	M8 x 1.25	14
25	17	15	6	22.5	M10 x 1.25	17.5
32	22	20.5	8	28.5	M14 x 1.5	23.5
40	22	20.5	8	28.5	M14 x 1.5	23.5
50	27	26	11	33.5	M18 x 1.5	28.5
63	27	26	11	33.5	M18 x 1.5	28.5
80	32	32.5	13	43.5	M22 x 1.5	35.5
100	41	32.5	16	43.5	M26 x 1.5	35.5