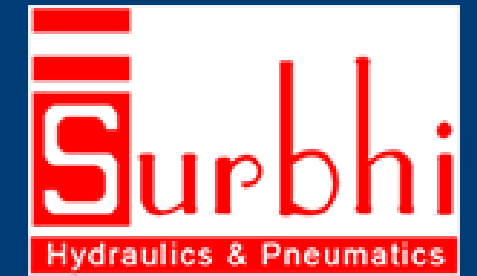


GENERAL CATALOGUE

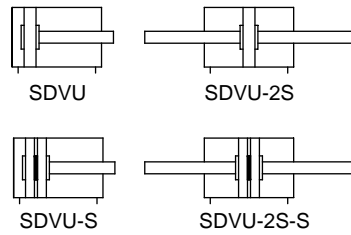


MOVEMENT

SDVU-S Series Compact Cylinder



- Bore: Φ 16-80mm
- Graphics Sign



Features

- Compact, light weight and space saving design
- Large clamping force in relation to their size
- Available with male and female thread piston rod
- Magnetic and non-magnetic versions
- Single and double acting configurations are available
- Easy in maintenance and disassembly

Order Code

SDVU

Series
SDVU: Standard double acting

20 x 40

Size
bore x stroke

2S

Piston Rod
Blank: single rod
2S: through Rod

B

Pistone Rod Thread
Blank: female thread
B: Male thread

S

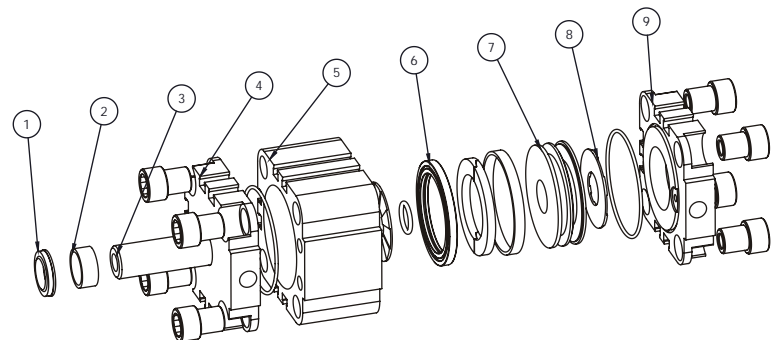
Magnet
Blank: without magnet
S: with magnet

Technical Parameter

Bore (mm)	16	20	25	32	40	50	63	80
Standard Stroke Length* (mm)	5, 10, 15, 20, 25, 30, 40, 50, 60, 70, 80							
Action	Double Acting Type							
Medium	Filtered and Lubricated Compressed Air							
Operating Pressure Range	1 - 10 Kg/cm ²							
Proof Pressure	15 Kg/cm ²							
Ambient And Medium Temperature	-5 - 70°C							
Operating Piston Speed	50 - 500 mm/s							50 - 300 mm/s
Cushion Type	Fixed Cushioning							
Port Size	M5 X 0.8				G1/8"			

* Non standard or longer stroke cylinders available on request

COMPONENTS

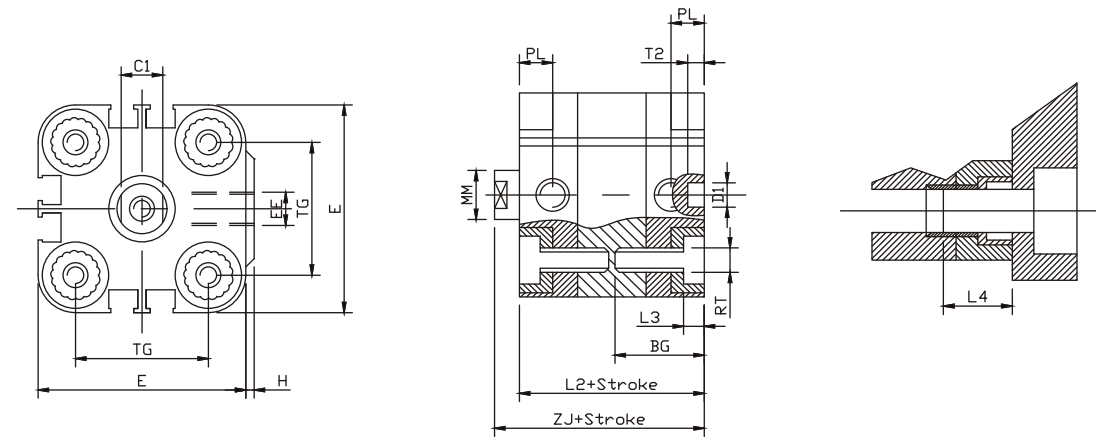


- 1 Piston Rod Seal- NBR
- 2 Guide Bush- Brass
- 3 Piston Rod- EN-8 Chrome Plated
- 4 Front Cup- Anodised Aluminium
- 5 Barrel- Anodised Aluminium
- 6 Piston Seal- NBR
- 7 Piston- Aluminium
- 8 Cushion Pad- NBR
- 9 Rear Cup- Anodised Aluminium

MOVEMENT

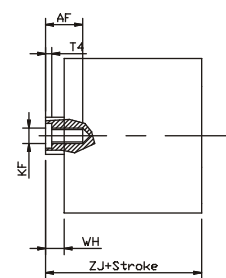
SDVU-S Series Compact Cylinder

Overall Dimension

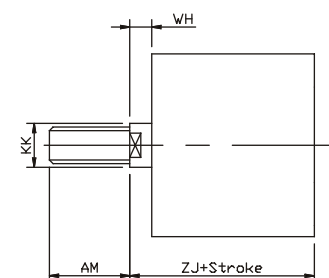


Bore	BG	D1	E1	EE	H	L2	L3	L4	MM	PL	RT	T2	TG	ZJ	C1
16	18.5	6	29	M5	1	38	3	16	8	8	M4x0.7	4	18	42.5	7
20	18.5	6	36	M5	1.5	38	4	18	10	8	M5x0.8	4	22	42.5	9
25	18.5	6	40	M5	1.5	39.5	4	18	10	8	M5x0.8	4	26	45	9
32	21.5	6	50	G1/8	2	44.5	5	20	12	8	M6x1.0	4	32	50.5	10
40	21.5	6	60	G1/8	2.5	45.5	5	20	12	8	M6x1.0	4	42	52	10
50	22	6	68	G1/8	3	45.5	6	20	16	8	M8x1.25	4	50	53	13
63	24.5	8	87	G1/8	4	50	8	25	16	8	M10x1.5	4	62	57.5	13
80	27.5	8	107	G1/8	4	56	8	25	20	8.5	M10x1.5	4	82	64	17
100	32.5	8	128	G1/4	5	66	8	25	25	10.5	M10x1.5	4	76	22	-

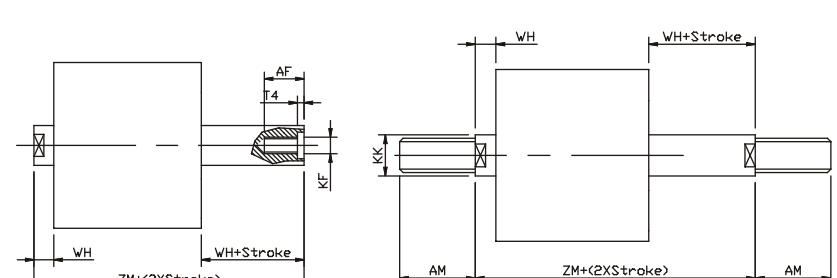
Rod End Female Thread



Rod End Male Thread



SDVU-2S



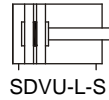
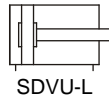
Bore	AF	AM	KF	KK	T4	WH	ZJ	ZM
16	10	20	M4	M8	1.5	4.5	42.5	47
20	12	22	M5	M10x1.25	2	4.5	42.5	47
25	12	22	M6	M10x1.25	2	5.5	45	50.5
32	14	22	M6	M10x1.25	2.6	6	50.5	56.5
40	14	22	M8	M10x1.25	2.6	6.5	52	58.5
50	16	24	M8	M12x1.25	3.3	7.5	53	60.5
63	16	24	M8	M12x1.25	3.3	7.5	57.5	65
80	20	32	M10	M16x1.5	4.7	8	64	72

MOVEMENT MOVEMENT

SDVU-L Non Rotary Compact Cylinder



- Bore: Φ 16-80mm
- Graphics Sign



Features

- Compact, light weight and space saving design
- Large clamping force in relation to their size
- Magnetic and non-magnetic versions
- Easy in maintenance and disassembly
- Non-rotary motion

Order Code

SDVU-L

Series
SDVU-L: Standard non-rotary double acting

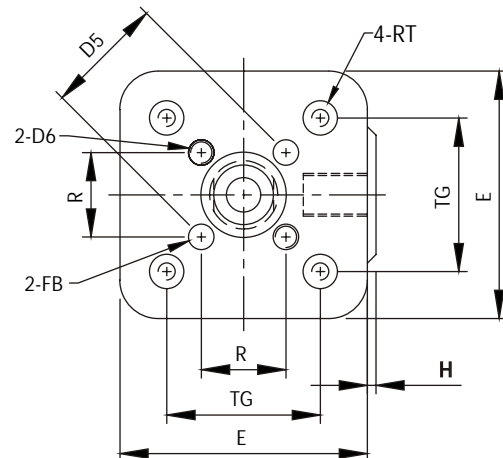
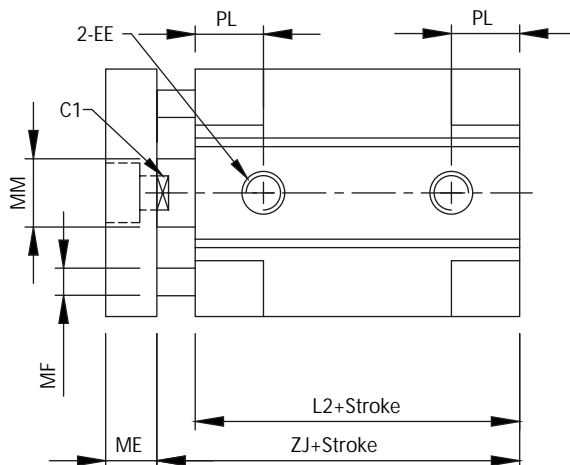
20 x 40

Size
bore x stroke

S

Magnet
Blank: without magnet
S: with magnet

Overall Dimension



Bore	BG	Φ D1	E	EE	H	L2	L3	L4	Φ MM	PL	RT	T2	TG	ZJ	C1	KF	R	D5	D6	Φ FB	ME	Φ MF
16	18.5	6	29	M5	1	38	3	16	8	8	M4X0.7	4	18	42.5	7	M4	9.9	14	M3	3	6	5
20	18.5	6	36	M5	1.5	38	4	18	10	8	M5X0.8	4	22	42.5	9	M5	12	17	M4	4	8	5
25	18.5	6	40	M5	1.5	39.5	4	18	10	8	M5X0.8	4	26	45	9	M5	15.6	22	M5	5	8	5
32	21.5	6	50	G1/8"	2	44.5	5	20	12	8	M6X1.0	4	32	50.5	10	M6	19.8	28	M5	5	10	6
40	21.5	6	60	G1/8"	2.5	45.5	5	20	12	8	M6X1.0	4	42	52	10	M6	23.3	33	M5	5	10	6
50	22	6	68	G1/8"	3	45.5	6	20	16	8	M8X1.25	4	50	53	13	M8	29.7	42	M6	6	12	8
63	24.5	8	87	G1/8"	4	50	8	25	16	8	M10X1.5	4	62	57.5	13	M8	35.4	50	M6	6	12	8
80	27.5	8	107	G1/8"	4	56	8	25	20	8.5	M10X1.5	4	82	64	17	M10	46	65	M8	8	14	10