

MOVEMENT MOVEMENT

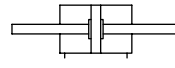
EMAL Series Cylinder



- Bore: Φ 20-40mm
- Graphics Sign



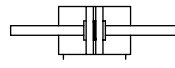
EMAL



EMAL-2S



EMAL-S



EMAL-2S-S

Features

- Cylinder manufactured by SPAC Standard
- Front cap, end cap and cylinder barrel are connected with threads
- Compact shape and wear resistant
- Low friction during operation hence a longer service life
- Available in magnetic and non-magnetic version
- Elastomer cushioning at both ends

Order Code

EMAL

Series
EMAL: Standard Double acting type

20 X 50

Size
Bore x Stroke

2S

Piston Rod
Blank: Single Rod
2S: Through Rod

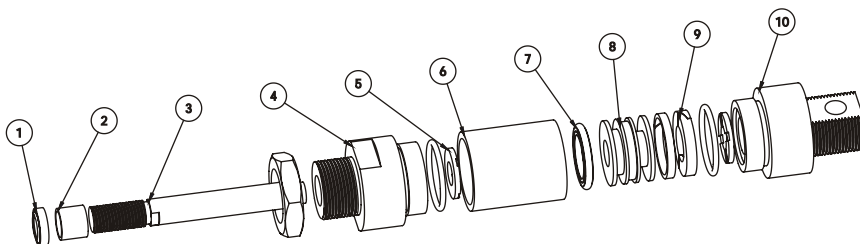
S

Magnet
Blank: without magnet
S: with magnet

Technical Parameter

Bore (mm)	20	25	32	40
Standard Stroke Length* (mm)	25, 50, 75, 100, 125, 150, 175, 200, 225, 250, 300, 350, 400			
Action	Double Acting Type			
Medium	Filtered and Lubricated Compressed Air			
Operating Pressure Range	1 - 10 Kgf/cm ²			
Proof Pressure	15 Kgf/cm ²			
Ambient And Medium Temperature	-5 - 70°C			
Operating Piston Speed	50 - 1200 mm/s			
Cushion Type	Fixed Cushion			
Port Size	G1/8"			G1/4"

Components



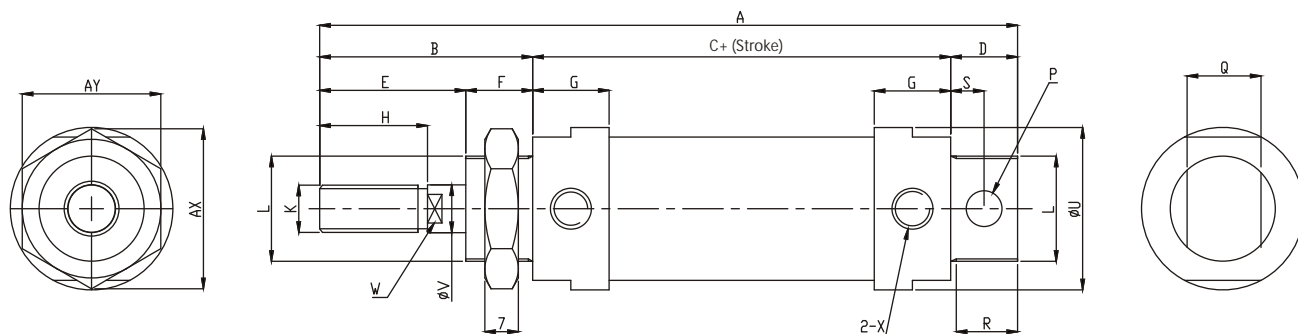
- ① Piston Rod Seal - NBR
- ② Guide Bush - Brass
- ③ Piston Rod - EN8 Chrome Plated Steel
- ④ Front Cup - Anodised Aluminium Alloy
- ⑤ Cushion Pad - NBR
- ⑥ Barrel - Aluminium Alloy
- ⑦ Piston Seal - NBR
- ⑧ Piston - Aluminium
- ⑨ Magnet
- ⑩ Rear Cup - Anodised Aluminium Alloy

MOVEMENT MOVEMENT

EMAL Series Cylinder

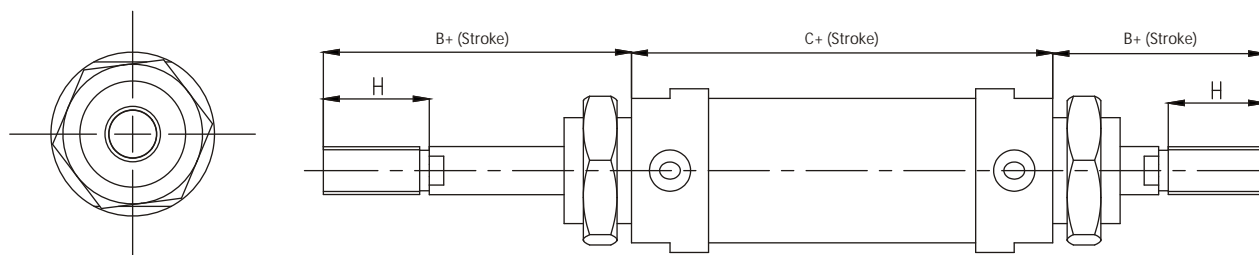
EMAL

Overall Dimension



EMAL-2S-S

Overall Dimension



Dimension Table

Bore	A	B	C	D	E	F	G	H	J	K
20	131	40	70	21	28	12	16	20	6	M8 x 1.25
25	135	44	70	21	30	14	16	22	6	M10 x 1.25
32	141	44	70	27	30	14	16	22	6	M10 x 1.25
40	165	45	92	27	32	14	22	24	7	M12 x 1.25

Bore	L	P	Q	R	S	U	V	W	X	AR	AX	AY
20	M22 x 1.5	8	16	19	12	29	8	6	G1/8"	7	33	29
25	M22 x 1.5	8	16	19	12	34	10	8	G1/8"	7	33	30
32	M24 x 2.0	10	16	25	15	39.5	12	10	G1/8"	8	37	32
40	M30 x 2.0	12	20	25	15	49.5	16	14	G1/4"	9	40	45