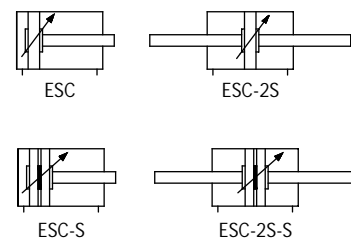


MOVEMENT

ESC Series Cylinder



- Bore: Φ 32-250mm
- Graphics Sign



Features

- Cylinder manufactured by SPAC Standard
- Robust in construction, tie-rod design
- Configuration with or without magnet
- Adjustable cushioning is standard for smooth functioning
- Single and double acting versions
- Extensive range of accessories for mounting the cylinder in any position
- Low friction during operation hence a longer service life

Order Code

ESC

Series
ESC: Standard Double Acting Type

50 X 50

Size
Bore x Stroke

2S

Rod
Blank: Single Rod
2S: Through Rod

S

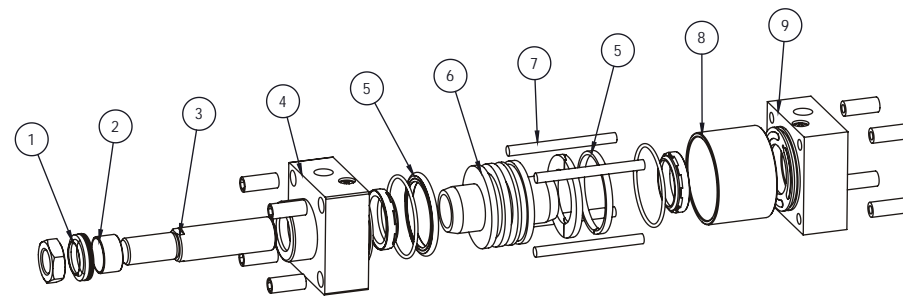
Magnet
Blank: without Magnet
S: with Magnet

Technical Parameter

Bore (mm)	32	40	50	63	80	100	125	160	200	250	
Standard Stroke Length* (mm)	25, 50, 80, 100, 125, 160, 175, 200, 250, 300, 350, 400, 450, 500, 600, 700, 800, 900, 1000										
Action	Double Acting Type										
Medium	Filtered And Lubricated Compressed Air										
Operating Pressure Range	1 - 10 Kg/cm ²										
Proof Pressure	15 Kg/cm ²										
Ambient And Medium Temperature	-5 - 70°C										
Operating Piston Speed	50 - 800 Mm/s										
Cushion Type	Adjustable Cushioning										
Cushion Stroke (mm)	24			32				45			
Port Size	G1/8"	G1/4"	G3/8"	G1/2"		G3/4"		G1"			

* Non standard or longer stroke cylinders available on request

Components



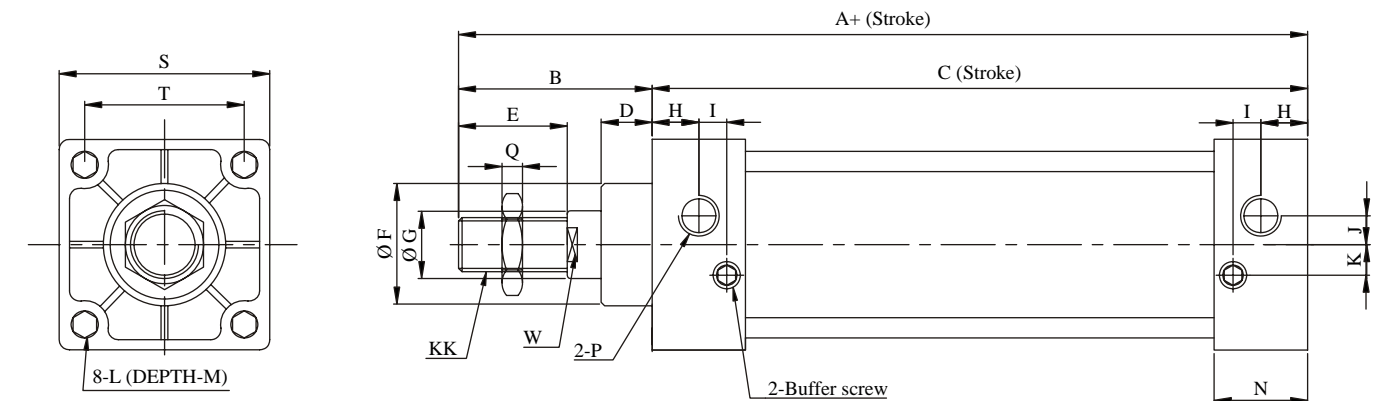
- 1 Piston Rod Seal - NBR
- 2 Guide Bush - Brass
- 3 Piston Rod - EN 8 Chrome Plated or SS
- 4 Front cup - Anodised Aluminium Alloy
- 5 Piston Seal - NBR
- 6 Piston - Aluminium
- 7 Tie Rod - MS
- 8 Barrel - Aluminium Alloy
- 9 Rear Cup - Anodised Aluminium Alloy

MOVEMENT

ESC Series Cylinder

ESC

Overall Dimension



Dimension Table

Bore	A	B	C	D	E	ØF	ØG	H	I	J
32	140	47	93	15	22	26	12	13.7	7.5	3.5
40	142	49	93	15	24	30	16	13.5	8.2	6
50	150	57	93	15	32	36	20	13.5	8.2	8.5
63	153	57	96	15	32	36	20	13.5	8.2	7
80	182	75	107	21	40	47	25	16.5	9.5	10
100	183	75	108	21	40	47	25	16.5	9.5	10
125	227	92	135	32	45	56	32	16.5	10	12.5
160	263	97	166	30	50	65	40	26	13	14.5
200	316	136	180	56	60	75	40	22.5	14.5	-
250	360	160	200	68	70	90	50	31	8.5	20.5

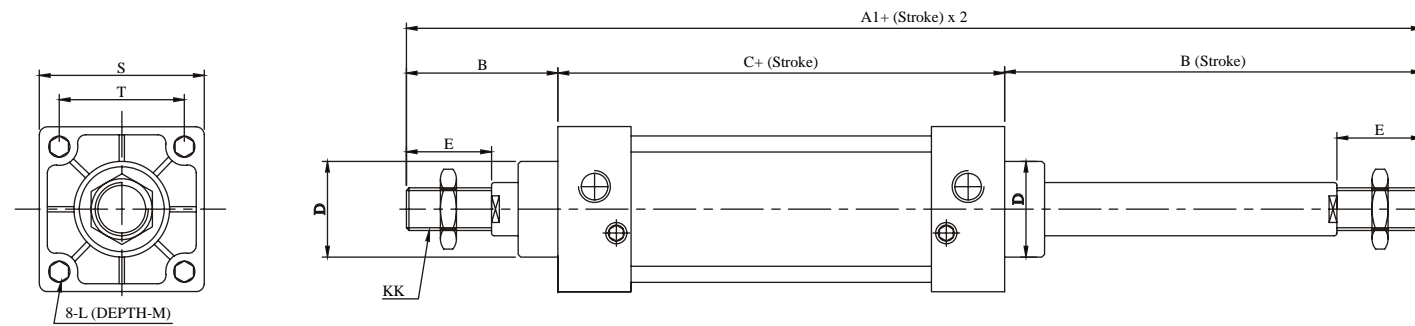
Bore (mm)	K	KK	L	M	N	P	Q	W	S	T
32	7	M10 x 1.25	M6 x 1	9.5	27.5	G1/8"	6	10	46	33
40	9	M12 x 1.25	M6 x 1	9.5	27.5	G1/4"	7	14	50	37
50	9	M16 x 1.5	M6 x 1	9.5	27.5	G1/4"	8	17	62	47
63	8.5	M16 x 1.5	M8 x 1.25	9.5	27.5	G3/8"	8	17	75	56
80	14	M20 x 1.5	M10 x 1.5	11.5	33	G3/8"	10	22	94	70
100	14	M20 x 1.5	M10 x 1.5	11.5	33	G1/2"	10	22	112	84
125	10	M27 x 2.0	M12 x 1.75	21	40	G1/2"	9	29	140	110
160	19.5	M36 x 2.0	M16 x 2	25	50	G3/4"	16	37	180	140
200	-	M36 x 2.0	M16 x 2	25	50	G3/4"	16	37	220	175
250	20	M42 x 2.0	M20	-	52	G1"	-	46	270	220

MOVEMENT

ESC Series Cylinder

ESC-2S

Overall Dimension



Dimension Table

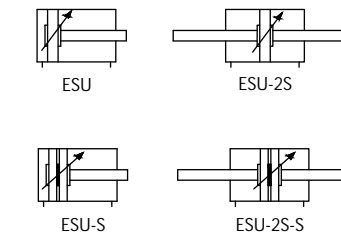
Bore	A1	B	C	D	E	N	KK	S	T	L	M
32	187	47	93	26	22	27.5	M10x1.25	46	33	M6x1	9.5
40	191	49	93	30	24	27.5	M12x1.25	50	37	M6x1	9.5
50	207	57	93	36	32	27.5	M16x1.5	62	47	M6x1	9.5
63	210	57	96	36	32	27.5	M16x1.5	75	56	M8x1.25	9.5
80	257	75	107	47	40	33	M20x1.5	94	70	M10x1.5	11.5
100	258	75	108	47	40	33	M20x1.5	112	84	M10x1.5	11.5
125	319	92	135	56	45	40	M27x2.0	140	110	M12x1.75	21
160	360	97	166	65	50	50	M36x2.0	180	140	M16x2	25
200	452	136	180	75	60	50	M36x2.0	220	175	M16x2	25
250	520	160	200	90	70	52	M42x2.0	270	220	M20	-

MOVEMENT

ESU Series Cylinder



- Bore: Φ 32-100mm
- Graphics Sign



Features

- Standard cylinder manufactured by SPAC
- Robust in construction, micky mouse profile
- Configuration with or without magnet
- Adjustable cushioning is standard for smooth functioning
- Single and double acting versions
- Extensive range of accessories for mounting the cylinder in any position
- Low friction during operation hence a longer service life

Order Code

ESU

Series
ESU: Standard Double Acting Type

50 X 50

Size
Bore x Stroke

2S

Piston Rod
Blank: Single Rod
2S: Through Rod

S

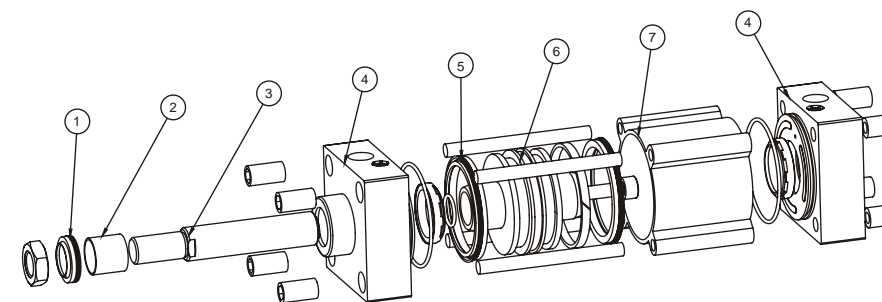
Magnet
Blank: Without Magnet
S: With Magnet

Technical Parameter

Bore (mm)	32	40	50	63	80	100
Standard Stroke Length* (mm)	25, 50, 75, 100, 125, 150, 175, 200, 250, 300, 350, 400, 450, 500					
Action	Double Acting Type					
Medium	Filtered And Lubricated Compressed Air					
Operating Pressure Range	1 - 10 Kg/cm ²					
Proof Pressure	15 Kg/cm ²					
Ambient And Medium Temperature	-5 - 70°C					
Operating Piston Speed	50 - 800 Mm/s					
Cushion Type	Adjustable Cushioning					
Cushion Stroke (mm)	24			32		
Port Size	G1 / 8	G1 / 4		G3 / 8		G1 / 2

* Non standard or longer stroke cylinders available on request

Components



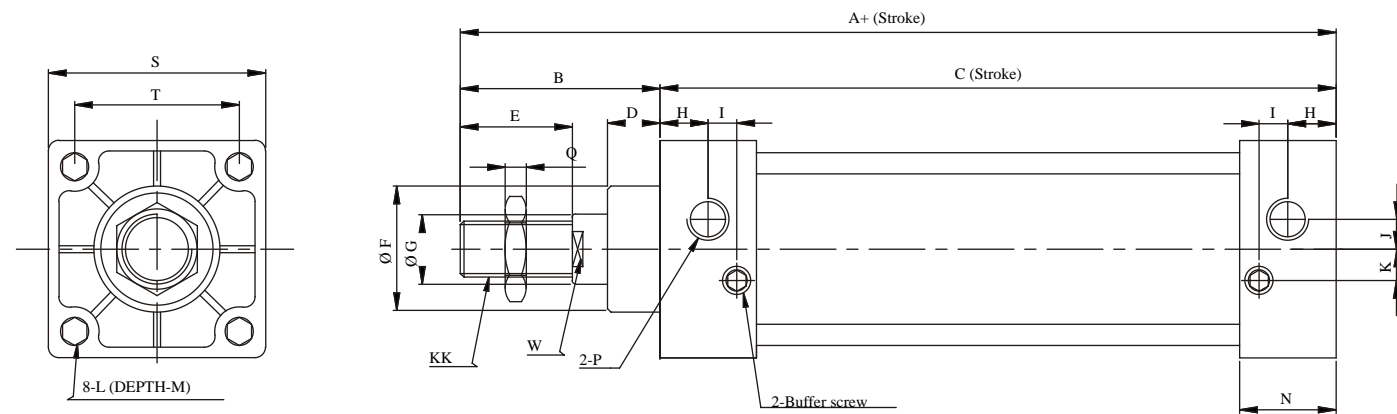
- ① Piston Rod Seal - NBR
- ② Guide Bush - Brass
- ③ Piston Rod - EN 8 Chrome Plated Steel or SS
- ④ Front & Rear Cup - Anodised Aluminium Alloy
- ⑤ Piston Seal - NBR
- ⑥ Piston - Aluminium
- ⑦ Barrel - Aluminium Alloy

MOVEMENT

ESU Series Cylinder

ESU

Overall Dimension



Dimension Table

Bore(mm)	A	B	C	D	E	ØF	ØG	H	I	J
32	140	47	93	15	22	26	12	13.7	7.5	3.5
40	142	49	93	15	24	30	16	13.5	8.2	6
50	150	57	93	15	32	36	20	13.5	8.2	8.5
63	153	57	96	15	32	36	20	13.5	8.2	7
80	182	75	107	21	40	47	25	16.5	9.5	10
100	183	75	108	21	40	47	25	16.5	9.5	10

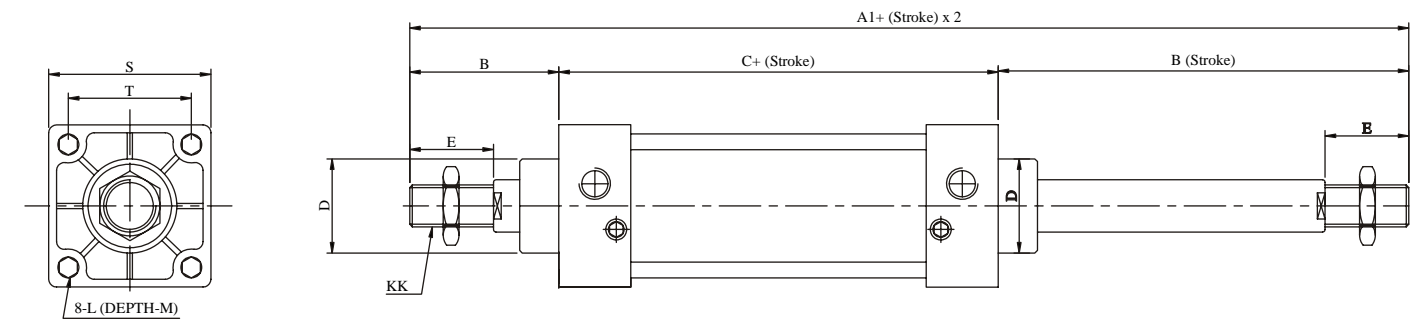
Bore (mm)	K	KK	L	M	N	P	Q	W	S	T
32	7	M10 x 1.25	M6 x 1	9.5	27.5	G1/8"	6	10	46	33
40	9	M12 x 1.25	M6 x 1	9.5	27.5	G1/4"	7	14	50	37
50	9	M16 x 1.5	M6 x 1	9.5	27.5	G1/4"	8	17	62	47
63	8.5	M16 x 1.5	M8 x 1.25	9.5	27.5	G3/8"	8	17	75	56
80	14	M20 x 1.5	M10 x 1.5	11.5	33	G3/8"	10	22	94	70
100	14	M20 x 1.5	M10 x 1.5	11.5	33	G1/2"	10	22	112	84

MOVEMENT

ESU Series Cylinder

ESU-2S

Overall Dimension



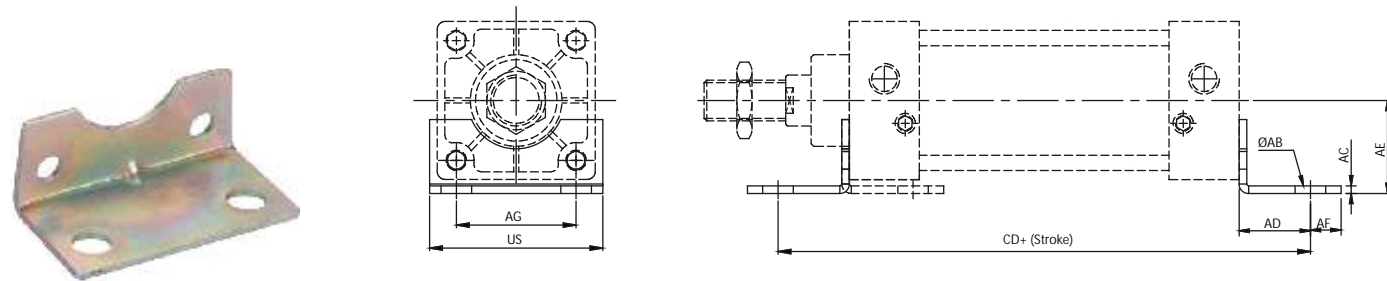
Dimension Table

Bore	A1	B	C	D	E	N	KK	S	T	L	M
32	187	47	93	26	22	27.5	M10x1.25	46	33	M6x1	9.5
40	191	49	93	30	24	27.5	M12x1.25	50	37	M6x1	9.5
50	207	57	93	36	32	27.5	M16x1.5	62	47	M6x1	9.5
63	210	57	96	36	32	27.5	M16x1.5	75	56	M8x1.25	9.5
80	257	75	107	47	40	33	M20x1.5	94	70	M10x1.5	11.5
100	258	75	108	47	40	33	M20x1.5	112	84	M10x1.5	11.5

MOVEMENT

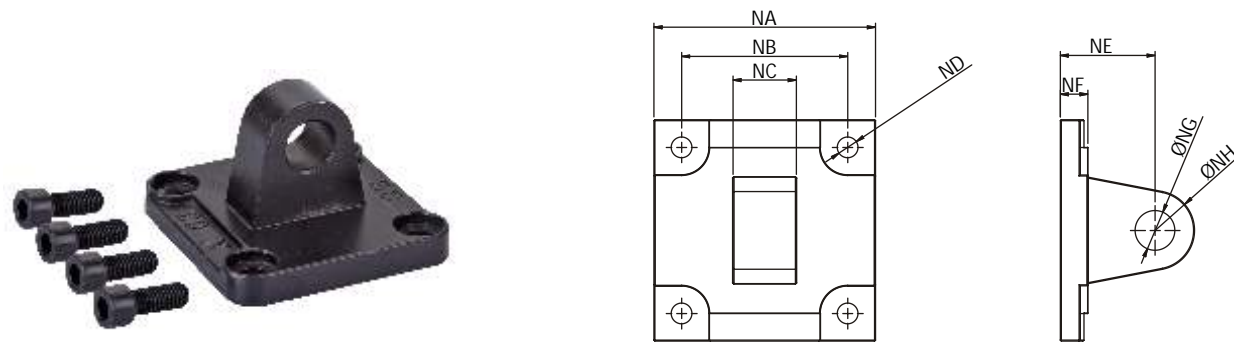
ESC/ESU Series Cylinder Mounting

LB-ESC



Model No.	Bore	ØAB	AC	AD	AE	AF	AG	CD	US
LBESC-32	32	7	3	22.5	30	7.5	33	138	50
LBESC-40	40	12	3	23.5	30	15	36	140	53
LBESC-50	50	12	3	28	36.5	12	47	149	68
LBESC-63	63	12	4	31	41	27	56	158	80
LBESC-80	80	14	4	30	49	16	70	167	97
LBESC-100	100	14	4	29	57	18	84	166	112

MS-ESC

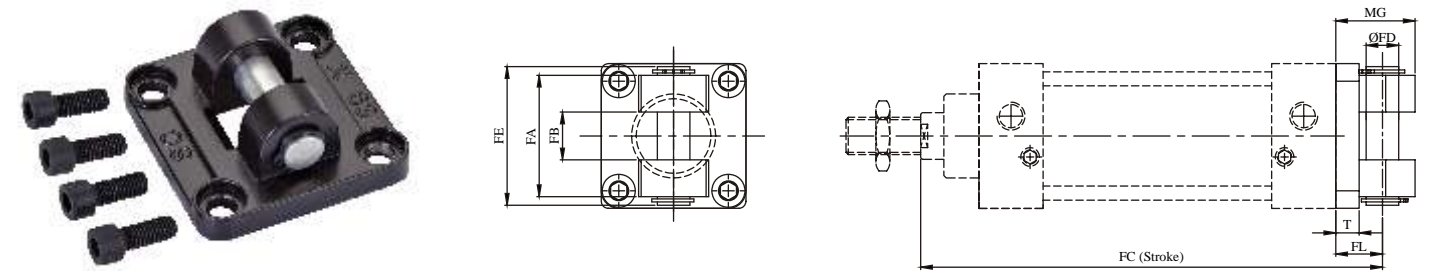


Model No.	Bore	NA	NB	NC	ND	NE	NF	NG	NH
MSESC-32	32	48	33	16	6.5	34	9	12	24
MSESC-40	40	50	37	20	6.5	34	9	14	28
MSESC-50	50	62	47	20	6.5	34	10	14	28
MSESC-63	63	75	56	20	8.5	34	10	14	28
MSESC-80	80	94	70	32	8.5	48	14	20	40
MSESC-100	100	112	84	32	10.5	48	14	20	40
MSESC-125	125	140	110	70	13	50	17.5	25	58
MSESC-160	160	176	140	90	17	34	21	30	52
MSESC-200	200	220	175	90	M16x2.5	62	27	30	65
MSESC-250	250	275	220	110	22	80	35	40	82

MOVEMENT

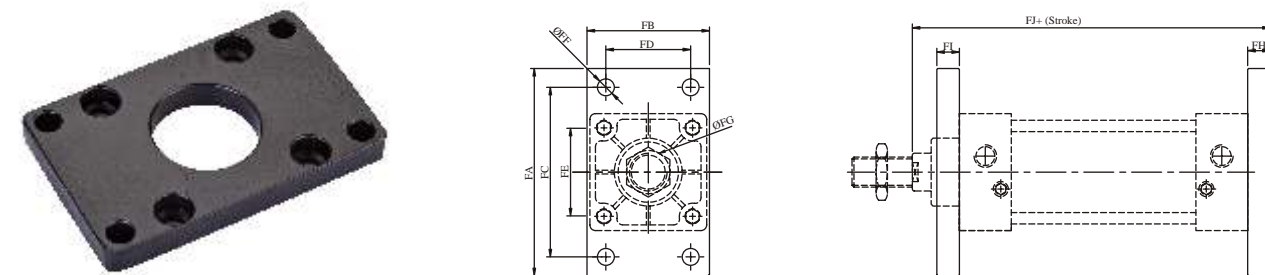
ESC/ESU Series Cylinder Mounting

MD-ESC



Model No.	Bore	FL	MG	T	FA	FB	FC	FD	FE
MDESC-32	32	20	31	9	32	16	138	12	41
MDESC-40	40	20	32	9	44	20	138	14	51
MDESC-50	50	20	34	10	52	20	138	14	59.5
MDESC-63	63	20	34	10	52	20	141	14	59.5
MDESC-80	80	32	52	14	64	32	174	20	71
MDESC-100	100	32	52	14	65	32	175	20	73
MDESC-125	125	50	75	17	128	70	233	25	137
MDESC-160	160	55	84	21	164	91	268	30	175
MDESC-200	200	60	88	28	176	90	316	30	186
MDESC-250	250	85	119	34	197	112	375	40	212

FA-ESC

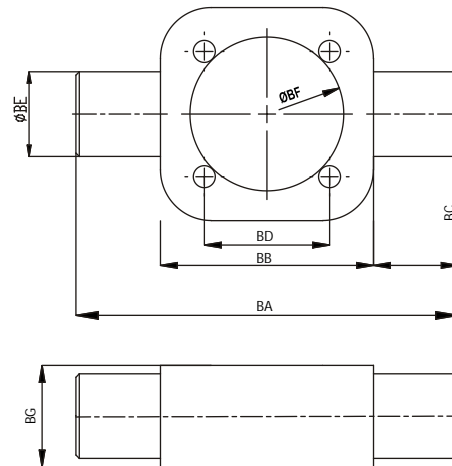


Model No.	Bore	FA	FB	FC	FD	FE	FF	FG	FH	FI	FJ
FAESC-32	32	72	47	58	33	33	7	27	10	15	128
FAESC-40	40	84	52	70	36	37	7	31	10	15	128
FAESC-50	50	104	65	86	47	47	9	37	10	15	128
FAESC-63	63	116	76	98	56	56	9	37	12	13	133
FAESC-80	80	143	95	119	70	70	11	48	16	19	158
FAESC-100	100	162	115	138	84	84	11	48	16	19	159
FAESC-125	125	224	140	180	90	110	16	57	20	27	202
FAESC-160	160	280	180	230	115	140	18	66	25	22	238
FAESC-200	200	320	220	270	135	175	22	76	25	51	281
FAESC-250	250	390	270	330	165	175	26	90	25	65	315

MOVEMENT MOVEMENT

ESC/ESU Series Cylinder Mounting

TC-ESC



Model No.	Bore	BA	BB	BC	BD	BE	BF	BG
TCESC-32	32	88	55	16.5	33	16	38	31
TCESC-40	40	113	63	25	37	25	45	30
TCESC-50	50	126	76	25	47	25	55	30
TCESC-63	63	138	88	25	56	25	68	30
TCESC-80	80	164	114	25	70	25	87	30
TCESC-100	100	182	132	25	84	25	107	38
TCESC-125	125	210	160	25	110	25	134	38
TCESC-160	160	264	200	32	140	32	172	38
TCESC-200	200	336	240	48	175	37	212	38
TCESC-250	250	405	320	42.5	220	40	270	60