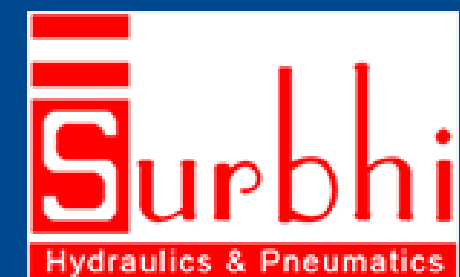


GENERAL CATALOGUE

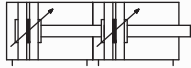


# MOVEMENT

Special Cylinder

## Tandem Cylinder

Graphic Sign



A tandem cylinder consists of two or more cylinders mounted in-line with pistons connected with a common piston rod. A tandem cylinder can provide amplified output force as compared to conventional cylinder of the same bore. In a tandem arrangement, it is possible through end-to-end linking of two to four cylinders of the same diameter and the same stroke length to obtain 2, 3 or 4 times the thrust of a conventional cylinder. This type of cylinder finds application in place where the diameter of the area in which the cylinder is placed is at a premium, but not its axial length.

## Order Code

**ESC**

**Series**  
SDNC : SDNC series double acting cylinder  
ESC : ESC series double acting cylinder  
SDVU : SDVU series double acting cylinder

**80 x 50**

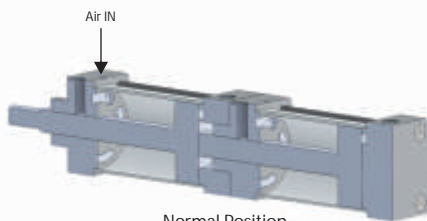
**Size :**  
Bore x stroke

**S**

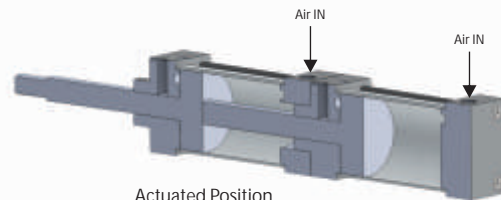
**Magnet**  
Blank : without magnet  
S : with magnet

**HP2**

**Thrust**  
HP2 : 2 Times Thrust  
HP3 : 3 Times Thrust



Normal Position



Actuated Position

## Multiposition Cylinder



A multi position cylinder for two, three or four positions consists of two or more cylinders mounted in following position using a suitable mounting kit.

- a) in-line
- B) back to back

## Order Code

**ESC**

**Series**  
SDNC : SDNC series double acting cylinder  
ESC : ESC series double acting cylinder  
SDVU : SDVU series double acting cylinder

**50 x100 x 30 x20**

**Size**  
Bore x stroke1 x stroke2 x stroke3\*  
\*Stroke3 only for in-line cylinder

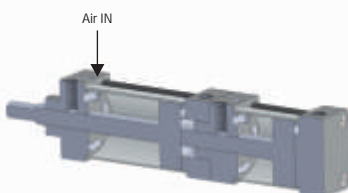
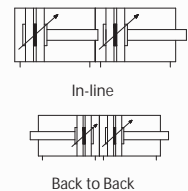
**S**

**Magnet**  
Blank : without magnet  
S : with magnet

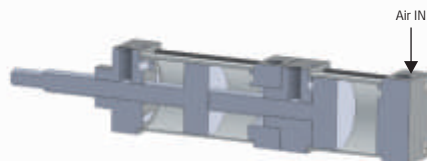
**2L**

**Multiposition Type**  
2L: 2 Stroke  
3L: 3 Stroke  
B2B: Back to back

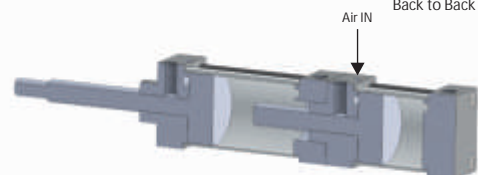
**Graphic Symbol**



Normal Position



First Actuated Position  
(Stroke1)



Second Actuated Position  
(Stroke2)