

Ball Valve



Features :

- 2 Way General Purpose.
- 1 PC, 2PC& 3PC Design.
- 3 way, 4way & panel Mounted.
- Jacketed Fire Safe Design.

Applications :

High pressure instrument lines, on/off shore, pneumatic systems, refineries, Pilot plants, analyzer labs, Gas sampling lines etc.

FEATURES :

- Handle position indicates flow direction.
- Straight through flow for minimum pressure drop.
- Micro finished ball for sealing.
- 900 actuation.
- Low operating torques.
- Two way installation.
- Viton O-rings or teflon washers for increased corrosion resistance.
- Each valve is 100% tested to ensure leak tightness at seat, shell & gland.

MATERIALS OF CONSTRUCTION:

- BALL : S.S316
- STEM : S.S. BRASS, CARBON STEEL, MONEL.
- SEATS : PTFE.
- GLAND PACKING : S.S & PTFE.
- INLET GASKET : VITON & PTFE.
- HANDLE : M.S COLOR CODED & S.S.
- TEMPARTURE : -300 TO 2300 C.
- WORKING PRESSURE : UP TO 6000 psig.
- SIZE RANGE : 1/8" to 4"
- END CONNECTIONS : SCREWED FEMALE/ MALE, TUBE FITTINGS, SOCKETWELDED, BUTTWELDED & FLANGEND.

Types : Screwed, Integral, Union & 2 Valves .

Applications :

Hydraulic systems, Oxygen service, instrumentation sampling systems, Test stands, High Temp. to 700 OF, Cooling Oil Lines.



MATERIALS OF CONSTRUCTION:

- BODY : S.S. BRASS, CARBON STEEL, MONEL.
- STEM : S.S316.
- GLAND PACKING : PTFE, Grafol.
- TEMPARTURE : -450 to 2500C.
- WORKING PRESSURE : UP TO 10,000 Psg.
- ORIFICE DIA : 1/8" (3mm) to 1/2" (12.7mm).
- NORMAL SIZE RANGE : 1/8" to 2".
- CARBON STEEL, ALUMINIUM OR S.S. SCREWED FEMALE/ MALE, TUBE END, SOCKETWELDED, BUTTWELDED & FLANGEND.

FEATURES :

- 1 Piece, 2piece union bonet type with lapored seat.
- Choice of replacement stem tip, v point, regulating or blunt stems for exact flow requirements.
- Precision Ground, Lapped Tip for perfect metal to metal sealing.
- Lubrication : Anti-seize lubricants on stem threads for easy operations & long life.
- Adjustable.
- TESTING : Each valve is 100% tested to ensure leak tightness at seal shell, & Gland.

Hydraulic Quick Coupler



K-Series ISO7241 Series "A" Interchange.

- Interchangeable to ISO7241 Series 'A'.
- Parker 6600-series, Aeroquip/Eaton FD 56 (5600).
- Faster ANV, Hansen HA 15000, Safway 356-series, DNP-PAV 1 series, Stuch-BIR series.

- Machined components are manufactured using solid steel bar stock.
- Stainless steel balls, retaining rings and springs maximize corrosion resistance and extend service life.
- Steel componentry is plated using ROHS compliant trivalent chrome.
- Steel coupler sleeves are hardened to resist deformation and maximise service life
- Steel nipples are hardened to provide heavy duty performance

Seal Components :

- Nitrile (Buna-N) seals are standard, providing a temperature range of -40°C (-40°F) to +121°C (250°F).
- Couplers have a PTFE Anti-Extrusion ring.
- Valve seals are crimped in place to maintain integrity during excessive flow conditions and pressurised connection.



COUPLER HANDLING PRECAUTIONS

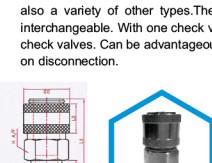
1. Avoid Connection and disconnecting the coupler when pressure is applied to preclude possible accident.
2. Coupler has been designed to insure complete safety. However avoid subjecting it to shock.
3. Removes foreign matter from the Fluid with a filter before hand. If Foreign matter mixed in the fluid, operation of the internal valve will be adversely effected, causing leakage.
4. Do not weld the coupler directly to Panels and fixtures. This damage the internal seal causing leakage and imperfect flow.
5. When disconnecting the coupler in dusty and sandy locations, always use the specified dust cap.
6. Never tap the valve section with a hammer, etc. to bleed residual pressure.

APPLICATION

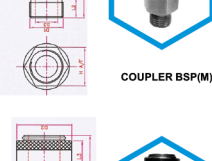
For Leakproof Handling of PROCESS LINE, CHEMICALS, GASES, LIQUIDS, HYDRAULICS AND SERVICE LINES LIKE COMPRESSED AIR, STEAM WATER, VACUUM, BRINE, CHILLED WATER, NITROGEN, BREATHING AIR ETC. IN CHEMICAL, REFINARIES, FERTILISER, ATOMIC POWER PLANTS, PHARMACEUTICAL, ENGG., MACHINE TOOL, AUTOMOBILE, PAINT, DYE-STUFF & VARNISH, PETROLEUM, FURNACES, TEXTILE MACHINES, REFRIGERATION INDUSTRIES.

Single Check Valve

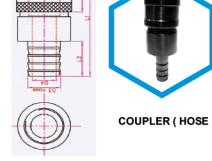
TYPE-SC is most popular type coupler used to connect air piping in factories and used to connect air tools with hoses etc. Both socket and plug have hose end and screw use advantages. There is also a variety of other types. The types 20, 30, 40, and Types 40B and 600 are completely interchangeable. With one check valve built into the coupling only whereas plugs do not have any check valves. Can be advantageously used where one side of the flow system needs to be sealed on disconnection.



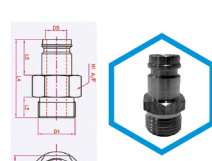
GRG SIZE (D1)	D2	D3	L1	L2	L3	H	A	B
1/8"	17.0	45.0	45.0	45.0	45.0	14.0	14.0	14.0
1/4"	22.0	65.0	65.0	65.0	65.0	19.0	19.0	19.0
3/8"	27.0	85.0	85.0	85.0	85.0	24.0	24.0	24.0
1/2"	32.0	105.0	105.0	105.0	105.0	29.0	29.0	29.0
3/4"	37.0	125.0	125.0	125.0	125.0	34.0	34.0	34.0
1"	42.0	145.0	145.0	145.0	145.0	39.0	39.0	39.0
1 1/4"	47.0	165.0	165.0	165.0	165.0	44.0	44.0	44.0
1 1/2"	52.0	185.0	185.0	185.0	185.0	49.0	49.0	49.0
2"	57.0	205.0	205.0	205.0	205.0	54.0	54.0	54.0



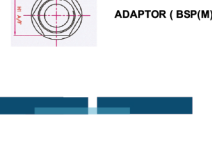
GRG SIZE (D1)	D2	D3	L1	L2	L3	H	A	B
1/8"	17.0	45.0	45.0	45.0	45.0	14.0	14.0	14.0
1/4"	22.0	65.0	65.0	65.0	65.0	19.0	19.0	19.0
3/8"	27.0	85.0	85.0	85.0	85.0	24.0	24.0	24.0
1/2"	32.0	105.0	105.0	105.0	105.0	29.0	29.0	29.0
3/4"	37.0	125.0	125.0	125.0	125.0	34.0	34.0	34.0
1"	42.0	145.0	145.0	145.0	145.0	39.0	39.0	39.0
1 1/4"	47.0	165.0	165.0	165.0	165.0	44.0	44.0	44.0
1 1/2"	52.0	185.0	185.0	185.0	185.0	49.0	49.0	49.0
2"	57.0	205.0	205.0	205.0	205.0	54.0	54.0	54.0



GRG SIZE (D1)	D2	D3	L1	L2	L3	H	A	B
1/8"	17.0	45.0	45.0	45.0	45.0	14.0	14.0	14.0
1/4"	22.0	65.0	65.0	65.0	65.0	19.0	19.0	19.0
3/8"	27.0	85.0	85.0	85.0	85.0	24.0	24.0	24.0
1/2"	32.0	105.0	105.0	105.0	105.0	29.0	29.0	29.0
3/4"	37.0	125.0	125.0	125.0	125.0	34.0	34.0	34.0
1"	42.0	145.0	145.0	145.0	145.0	39.0	39.0	39.0
1 1/4"	47.0	165.0	165.0	165.0	165.0	44.0	44.0	44.0
1 1/2"	52.0	185.0	185.0	185.0	185.0	49.0	49.0	49.0
2"	57.0	205.0	205.0	205.0	205.0	54.0	54.0	54.0

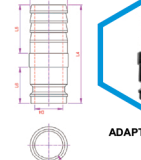


GRG SIZE (D1)	D2	D3	L1	L2	L3	H	A	B
1/8"	17.0	45.0	45.0	45.0	45.0	14.0	14.0	14.0
1/4"	22.0	65.0	65.0	65.0	65.0	19.0	19.0	19.0
3/8"	27.0	85.0	85.0	85.0	85.0	24.0	24.0	24.0
1/2"	32.0	105.0	105.0	105.0	105.0	29.0	29.0	29.0
3/4"	37.0	125.0	125.0	125.0	125.0	34.0	34.0	34.0
1"	42.0	145.0	145.0	145.0	145.0	39.0	39.0	39.0
1 1/4"	47.0	165.0	165.0	165.0	165.0	44.0	44.0	44.0
1 1/2"	52.0	185.0	185.0	185.0	185.0	49.0	49.0	49.0
2"	57.0	205.0	205.0	205.0	205.0	54.0	54.0	54.0

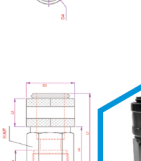


GRG SIZE (D1)	D2	D3	L1	L2	L3	H	A	B
1/8"	17.0	45.0	45.0	45.0	45.0	14.0	14.0	14.0
1/4"	22.0	65.0	65.0	65.0	65.0	19.0	19.0	19.0
3/8"	27.0	85.0	85.0	85.0	85.0	24.0	24.0	24.0
1/2"	32.0	105.0	105.0	105.0	105.0	29.0	29.0	29.0
3/4"	37.0	125.0	125.0	125.0	125.0	34.0	34.0	34.0
1"	42.0	145.0	145.0	145.0	145.0	39.0	39.0	39.0
1 1/4"	47.0	165.0	165.0	165.0	165.0	44.0	44.0	44.0
1 1/2"	52.0	185.0	185.0	185.0	185.0	49.0	49.0	49.0
2"	57.0	205.0	205.0	205.0	205.0	54.0	54.0	54.0

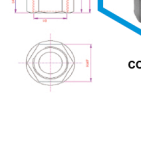
Single Check Valve



GRG SIZE (D1)	D2	L1	L2	L3	L4	H	A	B
1/8"	17.0	45.0	45.0	45.0	45.0	14.0	14.0	14.0
1/4"	22.0	65.0	65.0	65.0	65.0	19.0	19.0	19.0
3/8"	27.0	85.0	85.0	85.0	85.0	24.0	24.0	24.0
1/2"	32.0	105.0	105.0	105.0	105.0	29.0	29.0	29.0
3/4"	37.0	125.0	125.0	125.0	125.0	34.0	34.0	34.0
1"	42.0	145.0	145.0	145.0	145.0	39.0	39.0	39.0
1 1/4"	47.0	165.0	165.0	165.0	165.0	44.0	44.0	44.0
1 1/2"	52.0	185.0	185.0	185.0	185.0	49.0	49.0	49.0
2"	57.0	205.0	205.0	205.0	205.0	54.0	54.0	54.0



GRG SIZE (D1)	D2	L1	L2	L3	L4	H	A	B
1/8"	17.0	45.0	45.0	45.0	45.0	14.0	14.0	14.0
1/4"	22.0	65.0	65.0	65.0	65.0	19.0	19.0	19.0
3/8"	27.0	85.0	85.0	85.0	85.0	24.0	24.0	24.0
1/2"	32.0	105.0	105.0	105.0	105.0	29.0	29.0	29.0
3/4"	37.0	125.0	125.0	125.0	125.0	34.0	34.0	34.0
1"	42.0	145.0	145.0	145.0	145.0	39.0	39.0	39.0
1 1/4"	47.0	165.0	165.0	165.0	165.0	44.0	44.0	44.0
1 1/2"	52.0	185.0	185.0	185.0	185.0	49.0	49.0	49.0
2"	57.0	205.0	205.0	205.0	205.0	54.0	54.0	54.0



GRG SIZE (D1)	D2	L1	L2	L3	L4	H	A	B
1/8"	17.0	45.0	45.0	45.0	45.0	14.0	14.0	14.0
1/4"	22.0	65.0	65.0	65.0	65.0	19.0	19.0	19.0
3/8"	27.0	85.0	85.0	85.0	85.0	24.0	24.0	24.0
1/2"	32.0	105.0	105.0	105.0	105.0	29.0	29.0	29.0
3/4"	37.0	125.0	125.0	125.0	125.0	34.0	34.0	34.0
1"	42.0	145.0	145.0	145.0	145.0	39.0	39.0	39.0
1 1/4"	47.0	165.0	165.0	165.0	165.0	44.0	44.0	44.0
1 1/2"	52.0	185.0	185.0	185.0	185.0	49.0	49.0	49.0
2"	57.0	205.0	205.0	205.0	205.0	54.0	54.0	54.0

Quick Connect Couplers



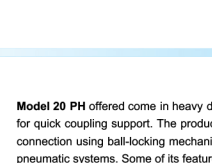
Model 20 PF offered come in heavy duty construction finish and provide for quick coupling support.

Features:

1. Accepts 1/4 NITTO type plugs
2. Heavy-duty, high-quality design
3. Deep knurled socket sleeve for positive gripping
4. Proven and positive connection using ball-locking mechanism

Specifications:

1. Used for pneumatic systems.
2. Working pressure: Less than 145 Psi; Max pressure: 150 Psi.
3. Material: Brass and steel are both available.
4. Temperature range: -20~70 Celsius degree.
5. Air flow: 35 SCFM at 100 PSIG inlet with 10 PSIG pressure.



Model 20 PH offered come in heavy duty construction finish and provide for quick coupling support.

Features:

1. Accepts 1/4 NITTO type plugs
2. Heavy-duty, high-quality design
3. Deep knurled socket sleeve for positive gripping
4. Proven and positive connection using ball-locking mechanism

Specifications:

1. Used for pneumatic systems.
2. Working pressure: Less than 145 Psi; Max pressure: 150 Psi.
3. Material: Brass and steel are both available.
4. Temperature range: -20~70 Celsius degree.
5. Air flow: 35 SCFM at 100 PSIG inlet with 10 PSIG pressure.

Quick Connect Couplers



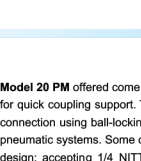
Model 20 SH offered comes designed and finished to accept 1/4 NITTO type plugs and come in heavy-duty construction finish for lasting service performance.

Features:

1. Accepts 1/4 NITTO type plugs
2. Heavy-duty, high-quality design
3. Deep knurled socket sleeve for positive gripping
4. Proven and positive connection using ball-locking mechanism

Specifications:

1. Used for pneumatic systems.
2. Working pressure: Less than 145 Psi; Max pressure: 150 Psi.
3. Material: Brass and steel are both available.
4. Temperature range: -20~70 Celsius degree.
5. Air flow: 35 SCFM at 100 PSIG inlet with 10 PSIG pressure.



Model 20 PM offered come in heavy duty construction finish and provide for quick coupling support.

Features:

1. Accepts 1/4 NITTO type plugs
2. Heavy-duty, high-quality design
3. Deep knurled socket sleeve for positive gripping
4. Proven and positive connection using ball-locking mechanism